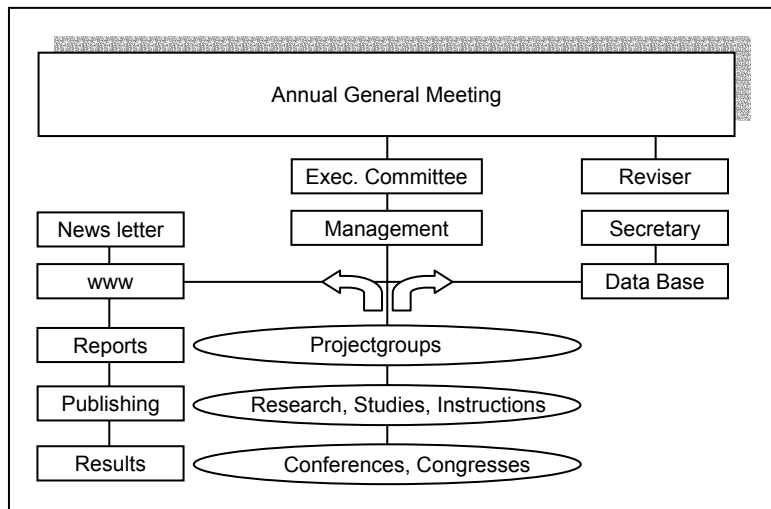


Organization Chart Montessori Europe



Extract from statutes of ME No. 4, the Bodies:

- *Annual General Meeting of the members (AGM)*
- *Executive Committee*
- *Executive Management*
- *Auditors (Revisers)*

Explanation to organization chart:

The products and results, which origin from activities of ME or are provided by members or partners and are distributed and accessible through the information platform of ME are listed on the left. All products and information is stored, filed and secured in a data base. Members have unlimited access, non members limited access.

The Executive Office is in charge of organizing project groups and initiates activities which focus on questions that are of interest for the members and the general development of the Montessori pedagogy. Research projects are conducted at university level. ME organizes at least one congress or conference a year. It is essential to seek co-operation with other organizations and participate in open dialogues about pedagogical topics and questions. All information and results which are published on the website of ME are respect and follow the „Open Policy of Exchange, Access und Innovation“ (see appendix).